

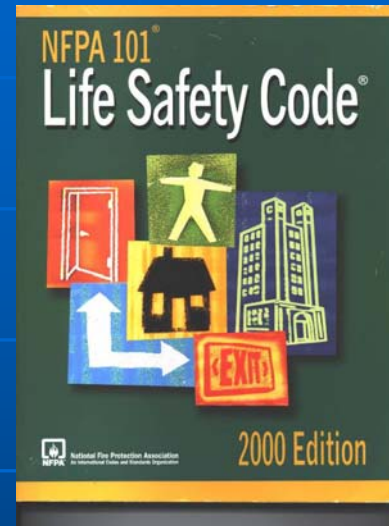
Fire Plans And Drills

Health Care Occupancies

Definitions

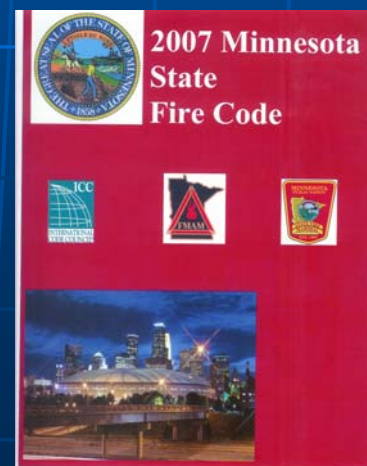
2000 Life Safety Code (LSC)

Required by Centers for
Medicare/ Medicaid
Services (CMS)

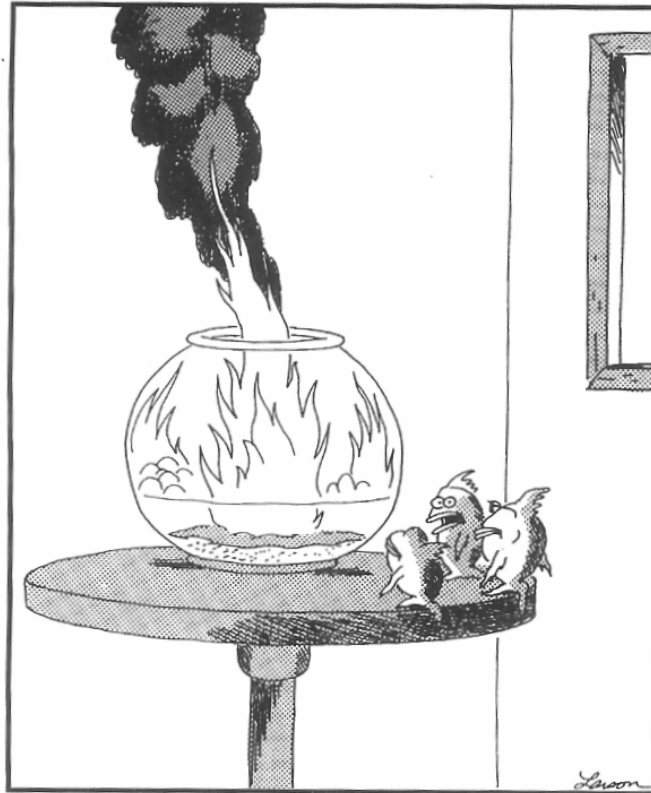


2007 Minnesota State Fire Code (*MSFC*)

Required for State
Licensure



Why do we Need a Fire Plan?



“Well, thank God we all made it out in time. ...
'Course, now we're equally screwed.”

Fire Plans are Required

(LSC 19.7.1.1 & MSFC 404.2)

- Administration is responsible to have a written fire plan
- Fire plan must be available to all supervisory staff
- A copy of the fire plan shall be readily available at the telephone operator's desk or at the security center



Fire Plans Must Include

(LSC 19.7.1.1)

- Protection of all persons
- Evacuation to areas of refuge
- Evacuation of the building when necessary

The Basic Response

(LSC 19.7.2.1)

■ R.A.C.E.

- **Rescue** (get people out of immediate danger)
- **Alarm** (use code word, sound alarm)
(notify the fire department)
- **Confine** (close all doors)
- **Extinguish** (if safe to do so)

Rescue and Alarm

■ Rescue

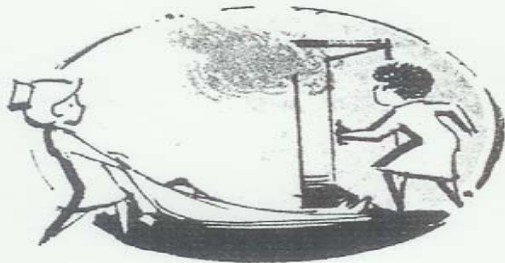
- Remove all occupants directly involved with the fire emergency

■ Alarm

- Transmission of fire alarm signal to warn other building occupants, summon staff and the fire department

Confine and Extinguish

- Confine
 - Confine the fire by closing doors to isolate the fire area and prevent the spread of smoke
- Extinguish the fire if safe to do so
- *PLUS*
 - Relocation of patients as detailed in the health care occupancy's fire safety plan



RESCUE

Move anyone in immediate danger
(Blanket pull, one man carry,
two man carry, wheel chairs)

ALARM

Sound the alarm
(Pull the pull station,
code word to alert staff,
call the Fire Department)



CONTAIN

CLOSE THE DOORS
(Automatic sprinkler systems)

EXTINGUISH

Put out the fire
(Portable fire extinguishers,
blankets to smother, water)



R A C E

Fire Plans Must Include

(Verbatim from the LSC, 19.7.2.2)

- A written health care occupancy fire safety plan shall provide for the following:
 - 1) Use of alarms
 - 2) Transmission of alarm to fire department
 - 3) Response to alarms
 - 4) Isolation of fire
 - 5) Evacuation of immediate area
 - 6) Evacuation of smoke compartment
 - 7) Preparation of floors and building for evacuation
 - 8) Extinguishment of fire

Fire Plans

- Use of alarms
 - Pull Stations
 - Room Smoke Detectors
 - Other
- Transmission of alarm to fire department
 - Includes a call to 911
- Response to alarms
 - Duties of staff
 - Many facilities break these down

Fire Plans

- Isolation of fire
 - Close doors
 - Automatic sprinkler systems
- Evacuation of immediate area
 - Rescue anyone in immediate danger
- Evacuation of smoke compartment
 - Move people through smoke barrier doors
 - Move people to specified areas

Fire Plans

- Preparation of floors and building for evacuation
 - Gather Medical records
 - Residents: Patients glasses, hearing aids, walkers, wheel chairs, etc.
 - How are you getting from here to there
- Extinguishment of fire

Fire Plans: Minnesota State Fire Code

(MSFC 404.3.2)

- How to report a fire or other emergency
- Strategies to notify, relocating, or evacuating occupants
- A site plans with
 - The assembly point
 - The locations of fire hydrants
 - The routes of fire department access

Fire Plans: State Plans Shall Include

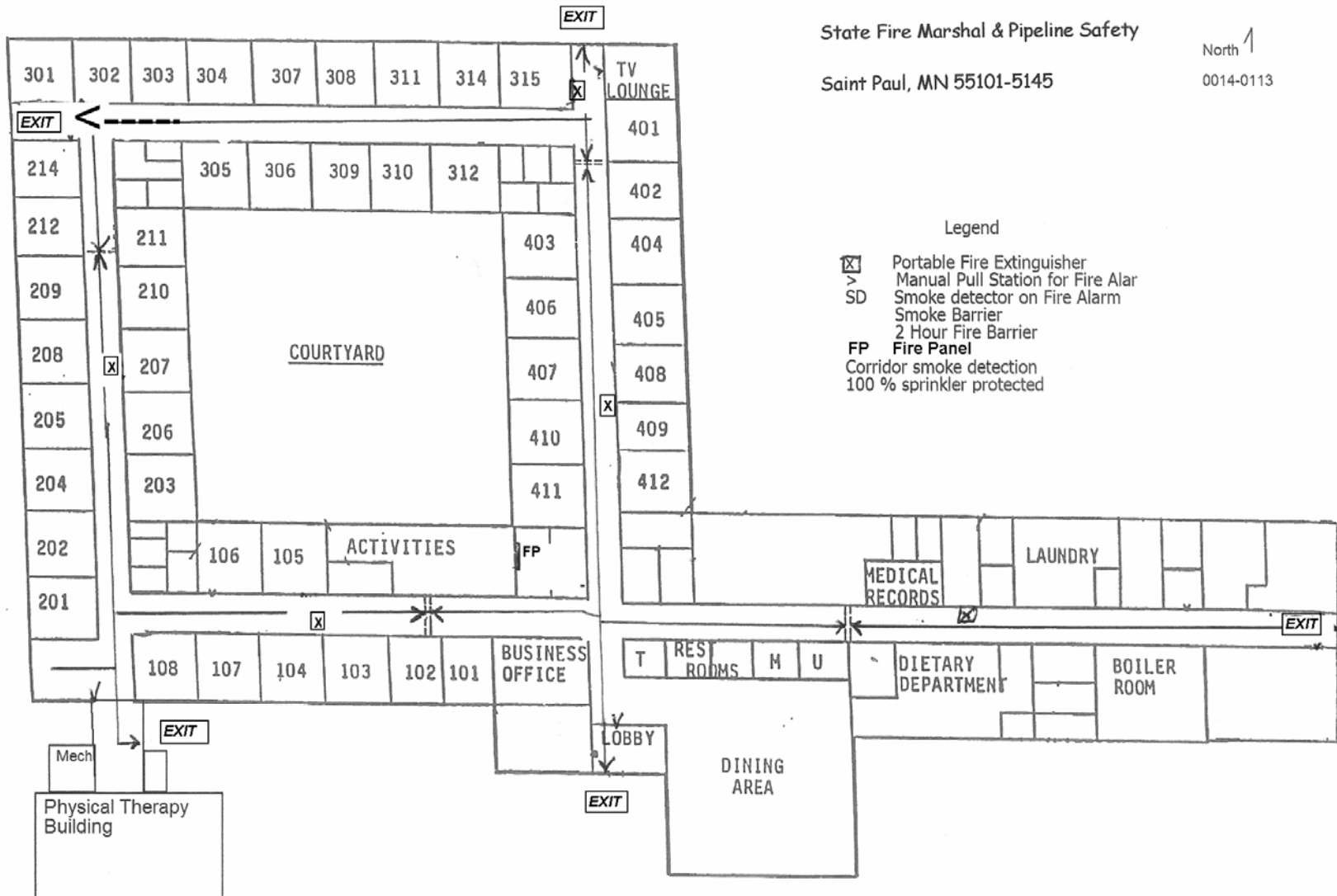
(MSFC 404.3.2)

- Floor plans include locations of:
 - Exits
 - Evacuation routes
 - Accessible egress routes
 - Areas of refuge
 - Manual fire alarm boxes
 - Portable fire extinguishers
 - Occupant-use hose stations
 - Fire alarm annunciators and controls

State Fire Marshal & Pipeline Safety

Saint Paul, MN 55101-5145

North ↑
0014-0113



Fire Plans: State Plans Shall Include

(MSFC 404.3.2)

- List of major fire hazards
- Identification and assignment of personnel responsible for maintenance of systems and equipment
- Identification personnel responsible for maintenance, housekeeping and controlling fuel hazard sources

Training Is Required

(LSC 19.7.1.3 and 19.7.2.3)

- All staff shall have periodic training
- Training must include all life safety procedures and devices
 - including the use of and response to fire alarms

(MSFC 406.3)

Training

(LSC 19.7.2.3)

- Staff shall be instructed in the use of code phrases for alarms
 - This is to ensure that the alarm is transmitted under the following conditions:
 - 1) When the individual who discovers a fire must go to the aid of a person in immediate danger
 - 2) If the fire alarm system is malfunction

Training

(LSC 19.7.2.3)

- Personnel hearing the announced code shall first activate the building fire alarm and then shall immediately execute their duties under the fire safety plan

Fire Drills Are Required

(LSC 19.7.1.2 & MSFC 406.3)

- For all Staff
 - nurses, interns, maintenance engineers, and administrative staff
 - to familiarize facility personnel with the signals and emergency action required under **varied conditions**



Conducting Fire Drills

- The purpose of a fire drill is to test the efficiency, knowledge and response of staff
- Schedule drills on a random basis *(MSFC 405.2)*
- Fire drills are to be conducted quarterly on each shift



FIRE DRILL.

The Nurses, Domestic Staff and Porters have periodical instruction in Fire Drill.

Fire Drills Shall

- Include simulated movement of patients to another smoke compartment
 - Relocation can be practiced using simulated patients or empty wheelchairs. *(MSFC 408.6.1)*

Fire Drills Shall

(LSC 19.7.1.2)

- Transmission of the fire alarm signal to the monitoring company
- Simulation of emergency fire conditions
 - Infirm or bedridden patients shall not be required to be moved during drills to safe areas or to the exterior of the building *(MSFC 408.6.1)*

Fire Drills

- The Life Safety Code allows a coded announcement to be used instead of audible alarms (LSC 19.7.1.2)
 - between 9:00 p.m. and 6:00 a.m. (2100 to 0600 hours)
- The Minnesota State Fire Code allows a coded announcement instead of audible alarms
 - after visiting hours or when patients or residents are expected to be asleep (*MSFC 408.6.2*)

Fire Drill Shall

(LSC 4.7)

- Be designed in cooperation with the local authorities *(MSFC 405.1)*
- Be held often enough to familiarize occupants with drill procedures and to make a fire drill a matter of routine *(MSCF 406.2)*
- Include procedures to ensure that all persons participate *(MSFC 406.1)*

Fire Drills

(LSC 4.7)

- Responsibility for the planning and conducting of drills shall be assigned only to competent persons *(MSFC 405.3)*
- Emphasis shall be placed on orderly evacuation rather than on speed

Fire Drills

(LSC 4.7)

- Drills shall be:
 - held at expected and unexpected times
 - under varying conditions *(MSFC 405.4)*

- Drill participants shall relocate to a predetermined location and remain at such location

Fire Drill Records

(MSFC 2007 405.5)

- Records shall be maintained for all required emergency evacuation drills and shall include the following information:
 - 1. Identity of the person conducting the drill
 - 2. Date and time of the drill
 - 3. Notification method used
 - 4. Staff members on duty and participating
 - 5. Number of occupants evacuated
 - 6. Special conditions simulated
 - 7. Problems encountered
 - 8. Weather conditions when occupants were evacuated outside
 - 9. Time required to accomplish complete evacuation

QUESTIONS?

